

Calendar Of Events 2026



2026

JANUARY

S	M	T	W	T	F	S
				1	2	3
4	5	6	7	8	9	10
11	12	13	14	15	16	17
18	19	20	21	22	23	24
25	26	27	28	29	30	31

FEBRUARY

S	M	T	W	T	F	S
1	2	3	4	5	6	7
8	9	10	11	12	13	14
15	16	17	18	19	20	21
22	23	24	25	26	27	28

MARCH

S	M	T	W	T	F	S
1	2	3	4	5	6	7
8	9	10	11	12	13	14
15	16	17	18	19	20	21
22	23	24	25	26	27	28
29	30	31				

APRIL

S	M	T	W	T	F	S
			1	2	3	4
5	6	7	8	9	10	11
12	13	14	15	16	17	18
19	20	21	22	23	24	25
26	27	28	29	30		

MAY

S	M	T	W	T	F	S
					1	2
3	4	5	6	7	8	9
10	11	12	13	14	15	16
17	18	19	20	21	22	23
24	25	26	27	28	29	30
31						

JUNE

S	M	T	W	T	F	S
	1	2	3	4	5	6
7	8	9	10	11	12	13
14	15	16	17	18	19	20
21	22	23	24	25	26	27
28	29	30				

JULY

S	M	T	W	T	F	S
			1	2	3	4
5	6	7	8	9	10	11
12	13	14	15	16	17	18
19	20	21	22	23	24	25
26	27	28	29	30	31	

AUGUST

S	M	T	W	T	F	S
						1
2	3	4	5	6	7	8
9	10	11	12	13	14	15
16	17	18	19	20	21	22
23	24	25	26	27	28	29
30	31					

SEPTEMBER

S	M	T	W	T	F	S
		1	2	3	4	5
6	7	8	9	10	11	12
13	14	15	16	17	18	19
20	21	22	23	24	25	26
27	28	29	30			

OCTOBER

S	M	T	W	T	F	S
				1	2	3
4	5	6	7	8	9	10
11	12	13	14	15	16	17
18	19	20	21	22	23	24
25	26	27	28	29	30	31

NOVEMBER

S	M	T	W	T	F	S
1	2	3	4	5	6	7
8	9	10	11	12	13	14
15	16	17	18	19	20	21
22	23	24	25	26	27	28
29	30					

DECEMBER

S	M	T	W	T	F	S
		1	2	3	4	5
6	7	8	9	10	11	12
13	14	15	16	17	18	19
20	21	22	23	24	25	26
27	28	29	30	31		

INDEX

Sl No	Particulars	Page No.
1	Vision and Mission	01
2	Chairman's Message	02
3	Medical Director's Message	03
4	Message from Director – HR & IT	04
5	Principal's Message	05
6	Sponsoring Trust (SCT)	06
7	Organization Chart	07
8	Officers of the Institute	08
9	Academic Meetings (Others)	09
10	Date and Month wise events January 2026-December 2026	10 - 16
11	Shridevi Institute for Advanced Medical Skills& Simulation (SIAMS)	16
12	National and International days of Importance	17
13	List of General holidays - 2026	18
14	List of Restricted holidays – 2026	19

OUR VISION

- To be partner in building India a world leader in Medical Education & Health care
- To establish & develop world class self reliant institute for imparting Medical and other Health Science education at under-graduate, post-graduate & doctoral levels of the global competence.

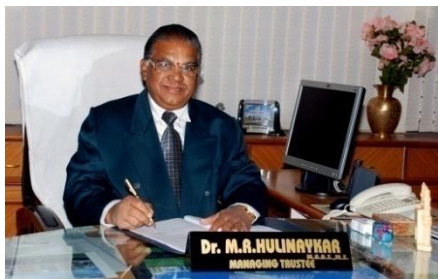
OUR MISSION

- To strive incessantly to achieve the goals of the Institution.
- To impart academic excellence in Medical Education.
- To practice medicine ethically in line with the global standard protocols.

OBJECTIVES

- To develop and provide professionally qualified doctors for augmenting the nation human resources through Bio-Medico-Socio-Epidemiological scientific research.
- To provide quality & affordable health care facilities and services to all sections of the society.
- To serve & educate the public, establish guidelines & treatment protocols to be followed by treating hospitals.
- To inculcate high moral, ethical and professional standards among students and to improve their overall personality as well as inculcate compassionate behavior.
- To evolve the Institution to the status of a Deemed University.
- Our Students - Our Assets.
- Our Staff - Our Means

MESSAGE FROM OUR CHAIRMAN



I feel glad to gift you Shridevi Institute of Medical Sciences & Research Hospital. Established in 2013 it is the Dream Project College of Sri Shridevi Charitable Trust. I congratulate you on your decision to make career in Medical field. At the outset let me inform that Medical Sciences is an application of your learning (knowledge and skills) in latest technology. For effective learning you need to understand basic concepts and principles involved in Health Sciences. The faculty in this college is one of the best in its class, and the college is being tie-up with several reputed healthcare institutions in the country so as to provide an excellent campus learning environment to its graduating students.

Considering the impact of globalization and competitive world, SIMS&RH faculty and staff are being trained on a continuous basis in curriculum development and analysis of each subject, its concepts, principles and applications. Learning packages based on human psychology of learning and subject matter analysis are prepared for easy understanding.

We also prepare multimedia learning packages for students in different subject areas. These multimedia teaching-learning packages help both teachers and students in making learning very effective. SIMS&RH aims at not only educating the young to be successful Healthcare Professionals, but also to churn out socially responsible human beings of tomorrow.

I convey my best wishes to all the students and their parents for a successful future and good education.

Dr. M. R. Hulinaykar
Chairman, Sri Shridevi Charitable Trust (R.)

MESSAGE FROM OUR MEDICAL DIRECTOR

Dear Prospective Students,



Thank you for expressing interest in The Shridevi Institute of Medical Sciences & Research Hospital, Tumakuru.

We understand choosing a medical college is one of the most important steps towards your career in Medicine. We can help you take this step with the confidence that comes from knowing you will receive an excellent Medical Education at The Shridevi Institute of Medical Sciences.

The Medical Programme at SIMS provides a broad foundation for study of Health & Disease. As it is already an important part of the learning experience, we persist on a continuous improvement plan which focus on new ways to integrate the clinical portion of our curriculum with the Foundation of Medicine courses. At The Shridevi Campus, We present our students as many opportunities as possible for you to see and understand the connections between the two as an excellent way to enhance learning.

The comprehensive study programme encourages our medical students to learn independently, while also working in teams as they will in their future careers. The Shridevi faculty engages students to apply their knowledge in more ways, and also encourage the use of technology to help learning. Our faculty is focused not only on their knowledge of the science of education, but also on learning new methods of teaching and new ways to reach our students. This results in a more successful education and leads to a better overall education for our students.

We are very proud of our students, our graduates and our Faculty. Together they represent our current & future commitment towards the Shridevi Trust's Vision - *"To transform students into innovative leaders with educational excellence and strong ethical values"*

I welcome you to the Shridevi Institute of Medical Sciences & Research Hospital and I look forward to meeting you on campus.

Dr. Raman. M. Hulinaykar

Medical Director

Shridevi Institute of Medical Sciences & Research Hospital

MESSAGE FROM OUR DIRECTOR – HR & IT



WELL BEGUN HALF DONE

DEAR PARENTS AND STUDENTS,

Shridevi Group is well-known for its academic institutions and healthcare services in Karnataka. Students across the globe come here for studies and to carve out a bright career for themselves. Shridevi Institute of Medical Sciences and Research Hospital has transformed into a hub of academic activities as far as medical education is concerned. The objective of the institute is not only imparting quality medical education to the students but also to motivate them to serve the rural community. Our initiative has won us accolades and recognition, far and wide.

The curriculum at this college is a perfect blend of academic acumen and professional inquisitiveness. We have a world-class infrastructure which is adoptive to new era of teaching and learning methodologies. Our students are trained to provide care under challenging circumstances and to effectively communicate and treat patients with respect and compassion. The institution's commitment is to improve the quality standards of healthcare through excellence in medical education, clinical research, publications and patient-care services. Students and faculty are deeply committed to the study and practice of medicine. The state-of-the-art skill laboratory focuses on achieving competency in skills.

I also appreciate the effort of the Principal in bringing up this calendar of events handbook every year which focuses on streamlining the academic & administrative activities and ensure that, they are implemented as per the schedule in imparting medical education.

Thank you for starting your medical career journey with us.

Wishing you all the success.

Sri M S Patil

Director - HR & IT

Shridevi Institute of Medical Sciences & Research Hospital

FOREWORD



DEAR COLLEAGUES,

On behalf of the management, and officers of college council, I wish all stake holders and patrons of the institution a very happy and prosperous new year-2026.

I deem it a privilege in presenting the calendar of events of the institution for the year 2026.

The purpose of the calendar of events is to accommodate all the academic, administration and other important activities of the institution, so that none of the programme /activities will be missed out.

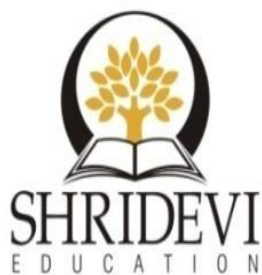
This handbook is expected to help the faculty and various committees to plan, organize and participate in the scheduled activities.

I take this opportunity to thank all faculty who were involved in planning the events and bring out this handbook of calendar of events.

As head of this institution, I am happy to share that the institution is committed to achieve greater quality in all its activities in a well planned manner.

Dr. M.L Harendra Kumar
Principal

Shridevi Institute of Medical Sciences & Research Hospital



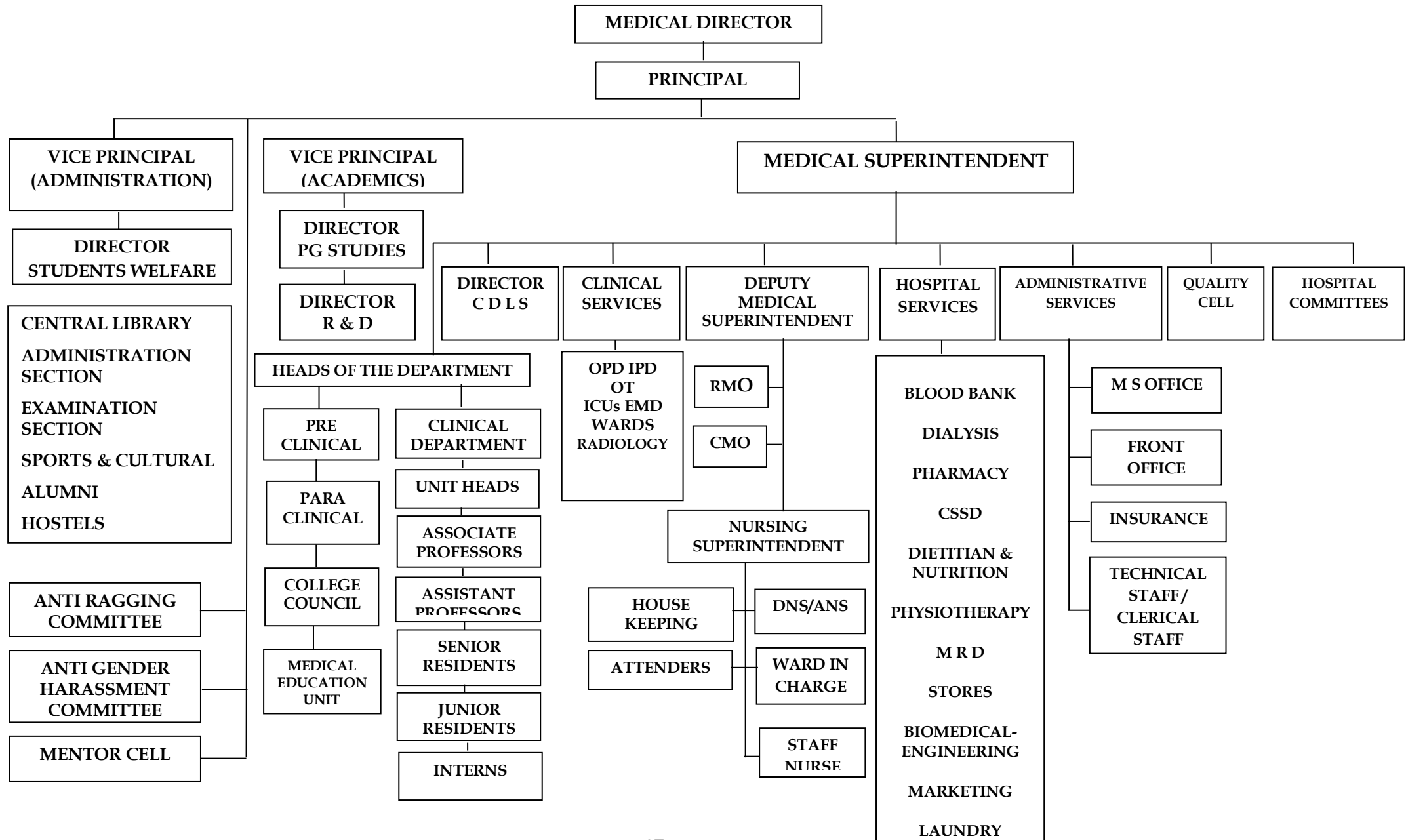
SRI SHRIDEVI CHARITABLE TRUST®

SPONSORING TRUST (SCT)

SL No	Name	Designation
1	Dr. M R Hulinaykar	Managing Trustee
2	Smt.Shantadurgadevi Hulinaykar	Trustee
3	Dr. Raman Hulinaykar	Trustee
4	Smt. Ambika Patil	Trustee
5	Dr. Lavanya Pillappa	Trustee

Sri Shridevi Charitable Trust ® was born in the year 2001 with a mission to impart the best quality education to students from all sections of the society. Ever since its inception, the Trust has been engaged in starting and managing educational institutions in various domains, considering the needs of the society. Presently, the Trust through its education wing, Shridevi Education is managing a teaching hospital, diagnostic lab, attached to Medical College, College for Nursing, College for Physiotherapy, College for Medical Lab & Technology, Teacher Education, College of Engineering & Technology, Polytechnic, ITI, Management School, Degree college, PU college, Distance Education Studies, Basic education from pre-school to High school etc.

**SHRIDEVI INSTITUTE OF MEDICAL SCIENCES &
RESEARCH HOSPITAL, TUMKUR**



OFFICERS OF THE INSTITUTE

Sl no	Name	Designation
1	Dr. Raman M H	Medical Director
2	Mr. Patil M S	Director, HR & IT
3	Dr. M L Harendra Kumar	Principal
4	Dr. Mohan Kumar K	Medical Superintendent, Chairman, Hospital Development committee
5	Dr. Rekha Gurumurthy	Vice-Principal, Academics & Director, PG Studies
6	Dr. Hemanth Raj M N	Vice-Principal-Administration, Anti-Ragging Committee & Disciplinary Committee, Grievance Redressal Committee
7	Dr. Lavanya P	Head of Purchases College/Hospital/Pharmacy & Member Secretary, Condemnation Committee
8	Dr. Channamallaiah	Deputy Medical Superintendent
9	Dr. Pradeep Kumar Vegi	Chief Administrative Officer (CAO)
10	Dr. Sathisha T G	Member Secretary, College Council
11	Dr. Roopashree S	Member Secretary, Hospital Infection Control Committee
12	Dr. Manju M D	Coordinator, Monthly Mortality Meeting Committee
13	Dr. Soumya K	Member Secretary, Scientific & Research Committee Director, Central Lab
14	Dr. Chethan L	Member Secretary, PG Academic Committee
15	Dr. Kavyashree N G	Chairperson, Internal Complaint Committee
16	Dr. Rajesh B	Director, Student Welfare, Member Secretary, PVC, Coordinator, Drug & Therapeutic Committee
17	Dr. Kusuma	Medical Education Unit – Coordinator, Member Secretary, Institutional Ethics Committee
18	Dr. Madhu Sudhan S	Member Secretary, Institutional Sports Committee
19	Mr. Sachin B S	Assistant Warden , Boys Hostel Committee& Social Media &Antaranga
20	Dr. Bhavana Prasad	Warden, Girls Hostel Committee& Member Secretary, Institutional Cultural Committee
21	Dr. Madhusudhan A V	Medical Officer, Core Committee (NTEP)
22	Mr. Prakash Bhovi	Convenor, Hospital Safety Committee
23	Dr. Jayakumar C.K	Coordinator, Blood Transfusion Committee
24	Dr. Shivaleela C	IQAC – Coordinator
25	Dr. Jeevan Reddy	Secretary, Alumni Association Committee
26	Dr. Yogesh D	Chief coordinator, Skill Lab Committee
27	Dr. Shilpasri Y M	Coordinator, Curriculum Committee
28	Dr. Sowjanya D	Coordinator, Institutional Cultural Committee

Academic & Administration Committee Meetings		
Sl No	Name of the meeting	Date
1	Interdepartmental PG program	Friday, weekly
2	Departmental Meeting	Every month
3	Hospital Safety Committee	Every month as scheduled
4	Drug & Therapeutic Committee	1st Saturday, monthly
5	Medical Record Committee	2nd Tuesday, monthly
6	College Council Meeting	2nd Thursday, monthly
7	Monthly Mortality Meeting	2nd Friday, monthly
8	Quality Improvement Committee	3rd Wednesday, monthly
9	Hospital Development committee meeting	3rd Thursday, monthly
10	Patient Safety & Risk Management Committee	4th Wednesday, monthly
11	Clinico-Pathological Case (CPC)	1st Friday once in 2 months
12	Clinical Case Presentation	1st Friday once in 2 months
13	Central Library Committee	Once in 2 months
14	PG Academic Committee Meeting	Once in 2 months
15	Institutional Ethics Committee Meeting	Once in 2 months
16	Medical Education Unit Meeting	Once in 2 months
17	Scientific & Research Committee Meeting	Once in 2 months
18	Credentialing and Privileging	Once in 3 months
19	Skill Lab Committee Meeting	Once in 3 months
20	Institutional Sports committee Meeting	Once in 3 months
21	Curriculum Committee	Once in 3 months
22	Hospital Infection Control Committee Meeting	2nd week, every quarter
23	Pharmaco vigilance committee meeting	2nd week, every quarter
24	Blood Transfusion Committee Meeting	3rd Wednesday, every quarter
25	Code Blue	Once in 3 months as scheduled
26	Code Pink	Once in 3 months as scheduled
27	Core Committee (NTEP) Meeting	Once in 3 months as scheduled
28	Radiation safety Committee	Once in 3 months as scheduled
29	Condemnation Committee Meeting	4th Saturday, every quarter
30	Selection Committee for promotion of teaching faculty (In SIMS & RH)	Month of Jan & July
31	Grievance Redressal Committee	Once in 3 month / According to the requirement
32	Internal Compliant Committee	Once in 3 month / According to the requirement
33	Disciplinary Committee Meeting	According to the requirement
34	Institutional Cultural Committee Meeting	According to the requirement
35	Boys Hostel Committee Meeting	According to the requirement
36	Girls Hostel Committee Meeting	According to the requirement
37	Selection Committee for recruitment of teaching faculty	According to the requirement

CALENDAR OF EVENTS			
January - 2026			
Sl No	Date	Activity Name	Department
1	1 st January	New year Celebration	All Departments
2	4 th January	World Braille Day	Ophthalmology
3	2 nd Week January	Core committee meeting of NTEP	Respiratory Medicine
4	20 th January	Guest Lecture	Anatomy
5	3 rd Week January	Guest Lecture	Biochemistry
6	30 th January	World Leprosy Day	Dermatology
7	January	Glaucoma Awareness	Ophthalmology
8	January	Thyroid Awareness Week	General Surgery

CALENDAR OF EVENTS			
February - 2026			
Sl No	Date	Activity Name	Department
1	03 rd to 09 th February	World Tinnitus Awareness Week	ENT
2	11 th February	CME – Genetics	Anatomy
3	February	BCME	Medical Education Unit
4	February	Age-Related Macular Degeneration/Low Vision	Ophthalmology

CALENDAR OF EVENTS			
March - 2026			
Sl No	Date	Activity Name	Department
1	03 rd March	World Hearing Day (GL)	ENT
2	08 th March	Women's day	Ophthalmology
3	1 st Week March	TB Sensitization programme for Interns	Respiratory Medicine
4	10 th to 16 th March	World's Glaucoma Day	Ophthalmology
5	13 th March	World's Sleep Day – Guest Lecture	Physiology
6	2 nd Week March	Poster/Model Presentation	Biochemistry
7	30 th March	World Bipolar day	Psychiatry
8	4 th Week March	Guest Lecture	General Medicine
9	Last Week March	World TB Day	Respiratory Medicine, Community Medicine
10	March	Research Methodology Workshop	Medical Education Unit

CALENDAR OF EVENTS			
April - 2026			
Sl No	Date	Activity Name	Department
1	01 st to 30 th April	Women's Eye Health & Safety Month	Ophthalmology
2	2 nd April	World Autism Awareness Day	Psychiatry
3	07 th April	World Health Day – Guest Lecture	Community Medicine, Ophthalmology
4	2 nd Week	Core Committee Meeting of NTEP	Respiratory Medicine
5	16 th April	CME	Pathology
6	16 th April	World Voice Day	ENT
7	20 th April	Illustrations in Anatomy – Hands on Workshops	Anatomy
8	April	Interns Orientation Programme	Medical Education Unit

CALENDAR OF EVENTS			
May - 2026			
Sl No	Date	Activity Name	Department
1	13 th May	Palliative Care – CME	Community Medicine
2	19 th May	National critical case awareness and recognition month	Emergency Medicine
3	20 th May	Moot Court	Forensic Medicine
4	21 st May	World Emergency Medicine Day	Emergency Medicine
5	22 nd May	Poster Making Competition on Physiology in Daily Life	Physiology
6	24 th May	World Schizophrenia Day	Psychiatry
7	29 th May	Guest Lecture	Emergency Medicine
8	31 st May	World-NO-Tobacco Day	Psychiatry
9	May	Microteaching & Pedagogy	Medical Education Unit
10	May	Myopia Awareness Week	Ophthalmology

CALENDAR OF EVENTS			
June - 2026			
Sl No	Date	Activity Name	Department
1	5 th June	World Environment Day	Physiology , Ophthalmology
2	6 th June	Poster Competition on AETCOM Module	Anatomy
3	19 th June	Guest Lecture	Pathology
4	2 nd Week June	Biochemistry Quiz	Biochemistry
5	21 st June	International Yoga Day	Physiology
6	25 th June	World Vitiligo Day	Dermatology
7	Last Week June	IAP-UG Quiz	Pediatrics
8	June	Fireworks Eye Safety Month	Ophthalmology
9	June	CISP- III (By Curriculum Committee)	Medical Education Unit
10	June	CME	General Surgery
11	June	Cataract Awareness Month	Ophthalmology

CALENDAR OF EVENTS			
July - 2026			
Sl No	Date	Activity Name	Department
1	1 st July	Doctors Day	Ophthalmology
2	1 st Week July	IAP-PG Quiz	Paediatrics
3	08 th July	World Skin Health Day	Dermatology
4	08 th July	World Allergy Day (CME)	ENT
5	2 nd Week	Core Committee Meeting of NTEP	Respiratory Medicine
6	2 nd Week	CME	Biochemistry
7	23 rd July	World Sjogren's Day	Ophthalmology
8	28 th July	CME on World Hepatitis Day	Microbiology
9	July	Organ Donation Month	General Surgery
10	July	UV Safety Month	Ophthalmology

CALENDAR OF EVENTS			
August - 2026			
Sl No	Date	Activity Name	Department
1	01 st to 07 th August	World breast feeding week	OBG, Community Medicine, Paediatrics
2	1 st Week August	TB Sensitization Programme for Staff	Respiratory Medicine
3	1 st Week August	Guest Lecture	Paediatrics
4	17 th August	National Pharmacologists day	Pharmacology
5	17 th to 21 st August	Contact Lens Health Week	Ophthalmology
6	25 th Aug to 08 th Sep	National Eye Donation Fortnight	Ophthalmology
7	August	Children's Eye Health and Safety Month	Ophthalmology

CALENDAR OF EVENTS			
September - 2026			
Sl No	Date	Activity Name	Department
1	5 th September	Teacher's Day	All departments
2	1 st Week September	CME	Paediatrics
3	08 th September	Plastination Workshop	Anatomy
4	10 th September	World Suicide Prevention day -	Psychiatry
5	13 th September	Guest Lecture on World Sepsis Day	Microbiology
6	17 th to 21 st September	National Pharmacovigilance Week	Pharmacology
7	18 th September	World Menopause Day	OBG
8	21 st to 27 th September	World Deafness Week (GL)	ENT
9	21 st September	World Alzheimer's Day	Psychiatry

CALENDAR OF EVENTS			
October - 2026			
Sl No	Date	Activity Name	Department
1	1 st October	International Day of Older Persons	Ophthalmology
2	1 st October	World Urticaria Day – Guest Lecture	Dermatology
3	8 th October	World Sight Day	Ophthalmology
4	10 th October	World Mental Health Day	Psychiatry
5	2 nd Week	Core Committee Meeting of NTEP	Respiratory Medicine
6	15 th October	World Anatomy day – Quiz Competition	Anatomy
7	16 th October	World Anaesthesiology day	Anaesthesiology
8	29 th October	World Psoriasis Day – Quiz Competition	Dermatology
9	October	Breast Cancer Awareness Month	General Surgery
10	October	State Level Conference	Medical Education Unit
11	October	Home Eye Safety Month	Ophthalmology

CALENDAR OF EVENTS			
November - 2026			
Sl No	Date	Activity Name	Department
1	07 th November	Cancer Awareness Day	General Surgery
2	08 th November	International day of radiology	Radiology
3	2 nd Week November	National New Born Week & Children's day celebration	Paediatrics
4	14 th November	World Diabetes Day	General Medicine, Ophthalmology
5	November	GERD Awareness Week	General Surgery
6	November	PG Internals	Ophthalmology

CALENDAR OF EVENTS			
December - 2026			
Sl No	Date	Activity Name	Department
1	01 st December	World AIDS Day	Community Medicine
2	01 st December	Poster Competition/Interdepartmental Activity	Dermatology
3	03 rd December	International Day of Persons with Disabilities	Ophthalmology
4	8 th December	Workshop on Systematic Review & Metanalysis	Anatomy
5	1 st week December	TB Sensitization programme for PG	Respiratory Medicine
6	12 th December	Universal Health Coverage Day	Ophthalmology
7	December	PG Synopsis	Ophthalmology

SHRIDEVI INSTITUTE FOR ADVANCED MEDICAL SKILLS & SIMULATION (SIAMS)		
CALENDAR OF EVENTS		
January 2026 – December 2026		
Sl No	Months	Activity Name
1	January	ECLS ToT-1 for faculties
2	February	ECLS ToT-2 for faculties
3	March	ECLS ToT-2 for faculties & FDB Simulation based training for faculties
4	April	ECLS training for Interns & Disaster Drill for Hospital staff
5	May	ECLS training for Interns ENLS ToT-1 for Nursing faculties
6	June	ECLS training for Interns, FDP Simulation based training for faculties & ENLS ToT-2 for Nursing faculties
7	July	ECLS training for Interns & ENLS ToT-2 for Nursing faculties
8	August	ECLS training for Interns
9	September	ECLS for Nursing Students & ECLS training for PG's
10	October	ECLS for Nursing Students & ECLS training for PG's
11	November	ECLS for Nursing Students & ECLS training for PG's
12	December	ECLS for Nursing Students

RGUHS EXAMINATION SCHEDULE

1. March/April - 2026 (tentative) for MBBS Phase III Part II.
2. March/April – 2026 (Supplementary) for PG.
3. July 2025 – UG supplementary Examination.
4. August/September - 2026 (tentative) for 2nd year MBBS.
5. August/September - 2026 (tentative) for MBBS Phase III Part I.
6. September/October – 2025 - PG Annual Exam
7. November- 2026 (tentative) for 1st year MBBS.

National and International days of importance

Date	Observed as
04 th Jan	World Braille Day
04 th Feb	World Cancer Day
06 th March	Glaucoma Day
08 th March	Internationals Women's Day
24 th March	World TB Day
07 th April	World Health Day
31 st May	Anti-Tobacco Day/World no tobacco Day
05 th June	World Environment Day
14 th June	World Blood Donation Day
21 st June	International Day of Yoga
01 st July	Doctors Day (In India)
11 th July	World Population Day
29 th July	ORS Day
05 th Sept	Teachers Day
21 st Sept	World Alzheimer's Day
29 th Sept	World Heart Day/World Rabies Day
15 th Oct	World Global hand washing Day
10 th Nov	World Immunization Day
14 th Nov	Diabetes Day
01 st Dec	World AIDS Day
03 rd Dec	International day for people with disabilities
09 th Dec	World Patient Safety Day

LIST OF GENERAL HOLIDAYS - 2026

DATE	DAY	HOLIDAY
Jan 15	Thursday	Makara Sankranti
Jan 26	Monday	Republic Day
Mar 19	Thursday	Chandramana Ugadi
Mar 21	Saturday	Ramzan
Mar 31	Tuesday	Mahaveer Jayanthi
Apr 03	Friday	Good Friday
Apr 14	Tuesday	Dr. B.R Ambedkar Jayanthi
Apr 20	Monday	Basava Jayanti/Akshya Tritiya
May 01	Friday	May Day / Labour day
May 28	Thursday	Bakrid
Jun 26	Friday	Last Day of Moharamm
Aug 15	Saturday	Independence Day
Aug 26	Wednesday	Id-E-Milad
Sep 14	Monday	Varasiddhi Vinayaka Vrata
Oct 02	Friday	MahathmaGandhi Jayanthi
Oct 10	Saturday	Mahalaya Amavasye
Oct 20	Tuesday	Maha Navami/Ayudhapooja
Oct 21	Wednesday	Vijayadashami
Nov 10	Tuesday	Balipadyami, Deepavali
Nov 27	Friday	Kanakadasa Jayanthi
Dec 25	Friday	Christmas

NOTE:The above list does not include the Government holidays which fall on Sunday i.e., 15.02.2026 - Maha Shivratri, 25.10.2026 - Maharshi Valmiki Jayanti, 01.11.2026 - Kannada Rajyotsava, 08.11.2026 - Naraka Chaturdashi.

LIST OF RESTRICTED HOLIDAYS - 2026

DATE	DAY	HOLIDAY
Jan 01	Thursday	New Year
Jan 27	Tuesday	Madva Navami
Feb 4	Wednesday	Shab E Barat
Mar 02	Monday	Holi
Mar 17	Tuesday	Shab-e-Qadr
Mar 20	Friday	Jamat Ul-Vida
Mar 23	Monday	Devara Dasimayya Jayanthi
Mar 27	Friday	Sri Ramanavami
Apr 04	Saturday	Holi Saturday
Apr 21	Tuesday	Shankaracharya Jayanti
Apr 22	Wednesday	Ramanujacharya Jayanti
Aug 21	Friday	Varamahalakshmi Vrata
Aug 27	Thursday	Yajur Upakarma
Aug 28	Friday	Brahma Narayana guru Jayanti
Sep 04	Friday	Sri Krishna Jayanthi
Sep 08	Tuesday	Kanya Mariyamma Jayanti
Sep 17	Thursday	Vishwakarma Jayanthi
Sep 25	Friday	Anantha Padmanabha Vartha
Nov 24	Tuesday	Gurunanak Jayanti
Nov 26	Thursday	Hatti Habba
Dec 24	Friday	Christmas Eve

NOTE:

The above list does not include the restricted holidays which falls on Sunday i.e., 18.10.2026 - Tula Sankramana, 01.05.2026 - Buddha purnima, 26.08.2026 - Rug Upakarma, 14.09.2026 - Swarana Gowri vratha.

- Faculty can avail any 2 RH from the above list.

2025

January

Su	M	Tu	W	Th	F	Sa
			1	2	3	4
5	6	7	8	9	10	11
12	13	14	15	16	17	18
19	20	21	22	23	24	25
26	27	28	29	30	31	

February

Su	M	Tu	W	Th	F	Sa
						1
2	3	4	5	6	7	8
9	10	11	12	13	14	15
16	17	18	19	20	21	22
23	24	25	26	27	28	

March

Su	M	Tu	W	Th	F	Sa
						1
2	3	4	5	6	7	8
9	10	11	12	13	14	15
16	17	18	19	20	21	22
23	24	25	26	27	28	29
30	31					

April

Su	M	Tu	W	Th	F	Sa
		1	2	3	4	5
6	7	8	9	10	11	12
13	14	15	16	17	18	19
20	21	22	23	24	25	26
27	28	29	30			

May

Su	M	Tu	W	Th	F	Sa
				1	2	3
4	5	6	7	8	9	10
11	12	13	14	15	16	17
18	19	20	21	22	23	24
25	26	27	28	29	30	31

June

Su	M	Tu	W	Th	F	Sa
1	2	3	4	5	6	7
8	9	10	11	12	13	14
15	16	17	18	19	20	21
22	23	24	25	26	27	28
29	30					

July

Su	M	Tu	W	Th	F	Sa
		1	2	3	4	5
6	7	8	9	10	11	12
13	14	15	16	17	18	19
20	21	22	23	24	25	26
27	28	29	30	31		

August

Su	M	Tu	W	Th	F	Sa
					1	2
3	4	5	6	7	8	9
10	11	12	13	14	15	16
17	18	19	20	21	22	23
24	25	26	27	28	29	30
31						

September

Su	M	Tu	W	Th	F	Sa
	1	2	3	4	5	6
7	8	9	10	11	12	13
14	15	16	17	18	19	20
21	22	23	24	25	26	27
28	29	30				

October

Su	M	Tu	W	Th	F	Sa
			1	2	3	4
5	6	7	8	9	10	11
12	13	14	15	16	17	18
19	20	21	22	23	24	25
26	27	28	29	30	31	

November

Su	M	Tu	W	Th	F	Sa
						1
2	3	4	5	6	7	8
9	10	11	12	13	14	15
16	17	18	19	20	21	22
23	24	25	26	27	28	29
30						

December

Su	M	Tu	W	Th	F	Sa
	1	2	3	4	5	6
7	8	9	10	11	12	13
14	15	16	17	18	19	20
21	22	23	24	25	26	27
28	29	30	31			

Super Speciality Facilities



Cardiology
CTVS



Neuro Surgery
Neurology



Surgical Oncology
Medical Oncology



Urology
Nephrology



Surgical Gastroenterology
Medical Gastroenterology



Spine Surgery



Plastic Surgery



NICU Unit

